

- ① RELOCATE EXISTING DIFFUSER TO GRID WITHIN AREA SHOWN.
- ② TRANSITION UP TO 76"x20" FOR RA UP TO RTU-1.
- ③ TRANSITION TO 69"x26" FOR SA DOWN FROM RTU-1.
- ④ FIELD ROUTE NEW REFRIGERANT SUCTION AND LIQUID LINES CONCEALED ABOVE CEILING.
- ⑤ FIELD ROUTE NEW REFRIGERANT SUCTION AND LIQUID LINES CONCEALED IN CHASE ALONGSIDE BASE ACROSS ENTRYWAY.
- ⑥ CAULK AND SEAL ALL PENETRATIONS OF REFRIGERANT LINES THROUGH ROOF.
- ⑦ FIELD ROUTE CONDENSATE LINES TO NEAREST JANITOR CLOSET OR MOP BASIN. SLOPE LINE AT 1/8" DROP PER LINEAR FOOT. CONDENSATE LINE TO BE SIZED NO LESS THAN CONNECTION SIZE AT UNIT COOLER.
- ⑧ NO WORK PERFORMED IN THIS ROOM.

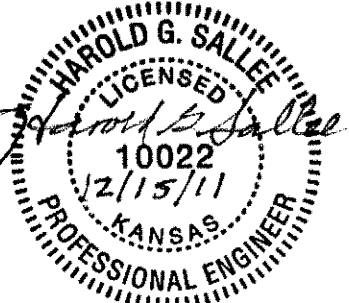


ARCHITECTURE
ENGINEERING
PLANNING
INTERIORS

ART FREELAND ROBERTS, INC.
237 Ward Parkway
Suite 108
Kansas City, MO 64114

16.822.8500	phone
16.822.8505	fax
www.hfrdesign.com	web

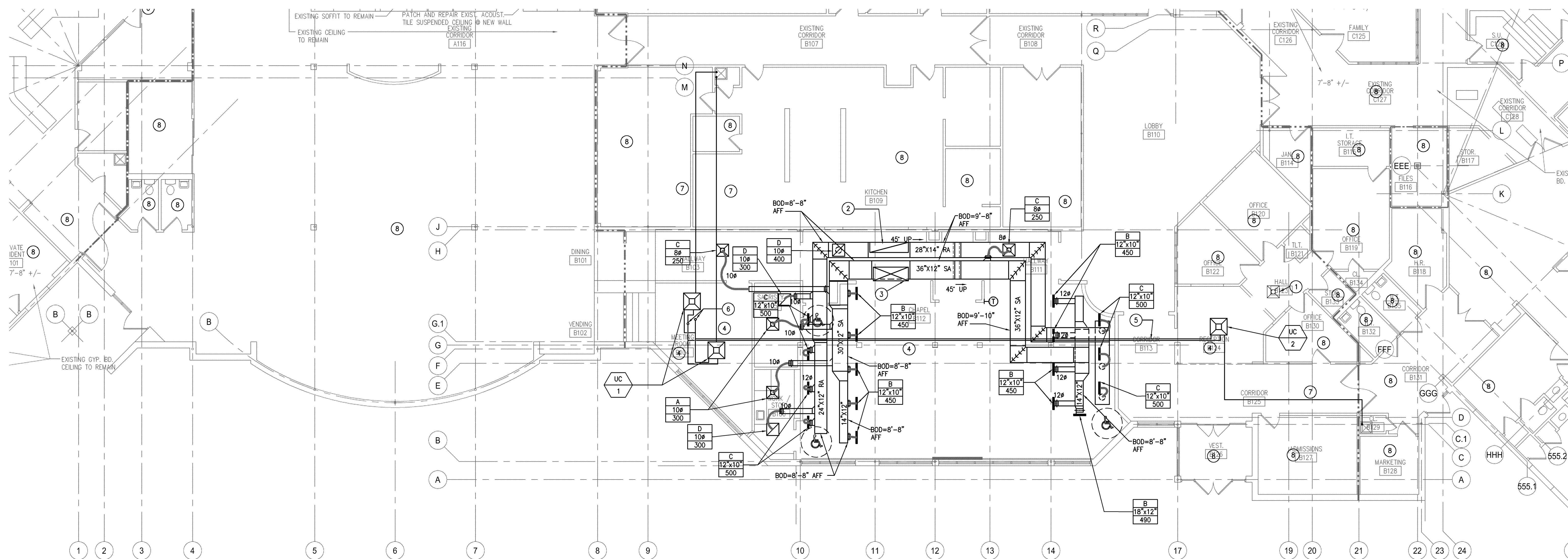
ashville, Tennessee
ackson, Tennessee
ansas City, Missouri
ouisville, Kentucky



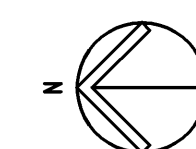
CONSTRUCTION DOCUMENTS
RENOVATIONS VILLA ST. FRANCIS NURSING & REHAB CENTER
16600 WEST 126TH STREET
OLATHE: KS.

ROJ. NO.: 2011115.00

DATE: 12-15-2011

MECHANICAL
FLOOR PLAN
$$\frac{M}{1.02}$$


MECHANICAL NEW WORK - AREA B



0 4' 8' 12'

$\frac{1}{8}'' = 1'-0''$



9225 Indian Creek Parkway
Suite 300
Overland Park, KS 66210
Phone: 816.333.4373
Fax: 913.722.3484