

FLOOR PLAN NOTES

- 1

REMOVE AND RELOCATE EXISTING FAN POWERED BOX. REMOVE ASSOCIATED BRANCH DUCTWORK AS INDICATED. REMOVE EXISTING TAKE-OFF AND PATCH/INSULATE MAIN IF NOT REUSED FOR NEW WORK.
- 2

RELOCATED FAN POWERED BOX. REBALANCE TO CFM INDICATED. VERIFY PROPER OPERATION UPON REINSTALLATION.
- 3

INSTALL EXISTING THERMOSTAT ON WALL. EXTEND CONTROL WIRING AS NECESSARY TO RECONNECT TO ASSOCIATED NEW/RELOCATED FAN POWERED BOX.
- 4

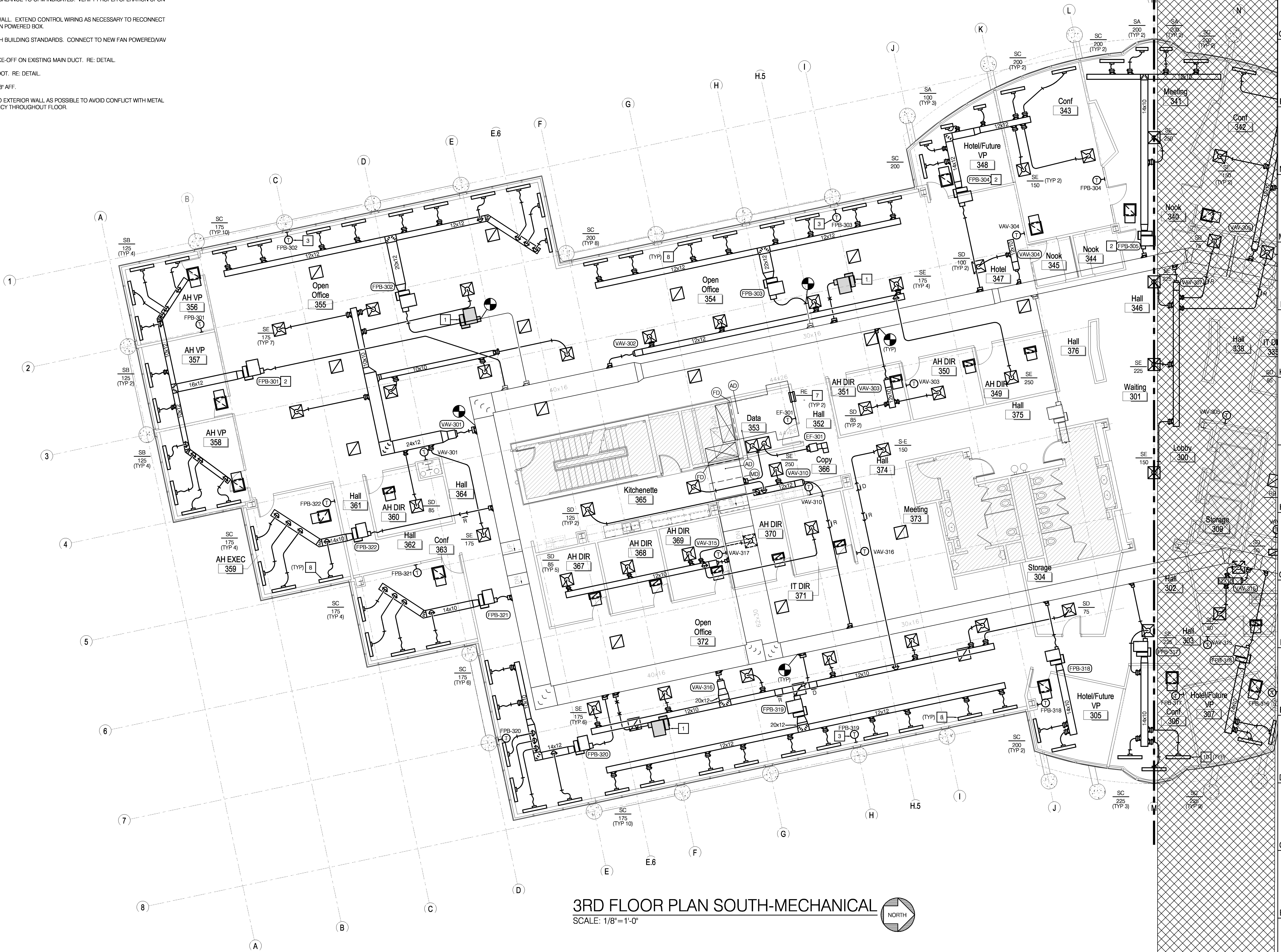
PROVIDE NEW THERMOSTAT TO MATCH BUILDING STANDARDS. CONNECT TO NEW FAN POWERED/NAV BOX.
- 5

PROVIDE NEW MEDIUM PRESSURE TAKE-OFF ON EXISTING MAIN DUCT. RE: DETAIL.
- 6

PROVIDE GRILLE WITH RETURN AIR BOOT. RE: DETAIL.
- 7

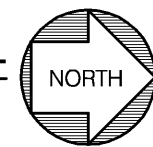
INSTALL BOTTOM OF WALL GRILLE AT 8" AFF.
- 8

INSTALL SLOT DIFFUSER AS CLOSE TO EXTERIOR WALL AS POSSIBLE TO AVOID CONFLICT WITH METAL STUD KICKERS. MAINTAIN CONSISTENCY THROUGHOUT FLOOR.



3RD FLOOR PLAN SOUTH-MECHANICAL

SCALE: 1/8"=1'-0"



Ascend Learning

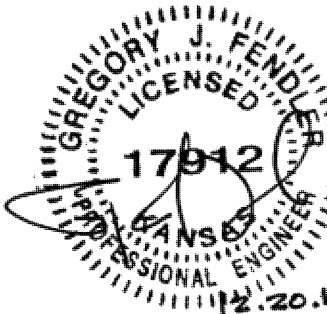
Tenant Improvement

11161 Overbrook Road
Leawood, Kansas

Two Hallbrook Place

ISSUED FOR:

Pricing Documents 20 December 2011



Gastinger
Walker
Harden
Architects

817 Wyndotte
Kansas City, MO 64105
816 421 8200 p
816 421 1262 f
www.gwhm.com

Structural Engineer
BSE Structural Engineers, LLC
9811 Plumm Road
Lenexa, KS 66215
913-492-7400

Mechanical/Electrical/Plumbing Engineer
Lankford + Associates Consulting Engineers, Inc.
1730 Walnut Street
Kansas City, MO 64108
816-221-1411

Lankford
+ associates
Consulting Engineers, Inc.

1730 Walnut Street 816.221.1411
Kansas City, Missouri 64108 Fax 816.221.1429
COPYRIGHT © 2011 LANKFORD + ASSOCIATES, INC.
L+A Project No. 4042

KEY PLAN

Drawn By RMF, JDB, SMP
Checked By GJF

3RD FLOOR PLAN
SOUTH-MECHANICAL

80.03

Project Number: 2011.250 © Copyright 2011